

NANTYGLO & BLAINA TOWN COUNCIL CYNGOR TREF NANT-Y-GLO A BLAENAU

Mrs T Hughes - Town Clerk/RFO

Council Offices, Blaina Institute, High Street, Blaina NP13 3BN
Swyddfa'r Cyngor, Sefydliad Blaenau, Y Stryd Fawr, Blaenau NP13 3BN

Tel: 01495 292817 E-mail: clerk@nantygloandblainatc.co.uk

Dear Member,

You are summoned to attend a hybrid meeting of the Highways and Planning Committee at Town Council Chamber, Blaina Institute, High Street, Blaina. to be held **on Tuesday 13th February 2024 at 5.30pm.**

If any Council Member or member of the public wishes to attend the meeting remotely, please contact the Town Clerk at the above e-mail or phone by 3pm on 13th February 2024 for details of how to access the meeting.

Please note the change of time

Yours sincerely

N Horner

Town Clerk

AGENDA

A meeting to which members of the public are entitled to attend.

To receive: Ms Emma Goode – Cost of Living Team, One Voice Wales

Members are reminded to note the Standing Orders relating to guest speakers:

1. Members to receive the presentation.
2. Questions to be invited at the end of the presentation.
3. Members are requested to ask only one question each – if time allows AND with permission of the Chair, a second question may be asked.
4. Members are reminded that there is to be no discussion or exchange of points of view between Members and that all dialogue is to be directed through the Chair.

Declaration of Interest

Members are invited to declare matters of interest either at the beginning or at any time during the proceedings. Members are reminded that all declarations of interest must be recorded in the book provided.

1. Apologies for absence:

Members are invited to consider the apologies for absence and to formally resolve to accept.

2. Questions from the public:

To receive any questions from the public regarding matters on the agenda. There is a 10-minute allocation time for any questions from the public

3. Correspondence:

Members are invited to consider the listed correspondence, plus with the Chair's permission, any urgent information that may well be received prior to the date of the meeting.

3.1 Email from Sabrina.Cresswell@blaenau-gwent.gov.uk , (copy attached):

Rights of Way Improvement Plan and includes Access Strategy Review.

3.2 Email from tgilmartin@onevoice.wales (copy attached)

Joint event One Voice Wales and planning aid Wales

4. Planning Applications:

Members are invited to consider the applications listed below and, with the permission of the Chair, any further applications that may be received prior to the date of the meeting:

a) Planning Application No. C/2024/0018– Mr & Mrs Price, 36 Glanystroth, Blaina, Abertillery, Blaenau Gwent, NP13 3NE

Proposed rear single extension to North elevation (*copy attached*).

5. Licence Applications:

Members are invited to note the application(s) **for information only:**

None received to date.

From: Cresswell, Sabrina <Sabrina.Cresswell@blaenau-gwent.gov.uk>
Sent: 17 January 2024 13:53
To: sabrina.cresswell@blaenau-gwent.gov
Subject: Rights of Way Improvement Plan (ROWIP) and include Access Strategy /Gynllun Gwella Hawliau Tramwy (CGHT) a chynnwys Strategaeth Mynediad
Attachments: ROWIP & Access Strategy Initial Consultation Release.docx; Cynllun Gwella Hawliau Tramwy (CGHT) Adolygiad o'r Strategaeth Mynediad Dogfen Ymgynghori Gychwynnol.docx

Wedi'i atodi, gweler hysbysiad o fwriad Cyngor Blaenau Gwent i ailgyhoeddi ei Gynllun Gwella Hawliau Tramwy (CGHT) a Strategaeth Mynediad.

Mae'r hysbysiad yn cynnwys y cylch gorchwyl arfaethedig a'r amserlen ar gyfer ailgyhoeddi.

Byddem yn falch o dderbyn unrhyw sylwadau sydd gennych ar strwythur yr adolygiad fel yr amlinellir yn y ddogfen atodedig. Bydd ymarfer ymgynghori a chasglu gwybodaeth ehangach i hysbysu sylwedd y cynllun yn dilyn yn ddiweddarach yn y broses.

Please find attached notice of Blaenau Gwent Council's intention to republish its Rights of Way Improvement Plan (ROWIP) and Access Strategy.

The notice includes the proposed terms of reference and timetable for republication.

We would be happy to receive any comments you may have on the structure of the review as outlined in the attached document. A wider consultation and information gathering exercise to inform the substance of the plan will follow at a later stage in the process.

Cofion cynnes / Kind regards,

Sabrina Cresswell

Access Strategy Officer | Swyddog Strategaeth Mynediad
COMMUNITY SERVICES DIVISION | GWASANAETHAU CYMUNEDOL
Blaenau Gwent County Borough Council | Cyngor Bwrdeisdref Sirol Blaenau Gwent
sabrina.cresswell@blaenau-gwent.gov.uk
Blaenau Gwent County Borough Council, The General Offices, Steelworks Road, Ebbw Vale NP23 6DN
Website: <https://www.blaenau-gwent.gov.uk/en/home/>
Twitter: <http://www.twitter.com/blaenauwentcbc>
Facebook: <http://www.facebook.com/blaenauwentcbc>





NANTYGLO & BLAINA

TOWN COUNCIL

**'Rights of Way Improvement Plan' (ROWIP)
and Access Strategy Review
Initial Consultation Document
Blaenau Gwent County Borough Council**

Blaenau Gwent County Borough Council gives notice of its intention to review its Rights of Way Improvement Plan (ROWIP) inclusive of an Access Strategy Document and seeks comment on the process and timetable set out below, for the purposes of s61(1) of the Countryside and Rights of Way Act 2000.

Please find below the background, outline of process, terms of reference and user facing timetable relevant to the review. Any comments should be submitted to Mr Gwyn Teague by [17/01/2024 + 28 Days] at the following address:-

Mr Gwyn Teague,
Team Manager – Natural Environment
Blaenau Gwent County Borough Council
The General Offices
Steelworks Road
Ebbw Vale
NP23 6DN

gwyn.teague@blaenau-gwent.gov.uk

A. Background

Blaenau Gwent County Borough Council has a Public Rights of Way Network of over 300 km of paths and trails. It comprises ways that can be used on foot (footpaths), horse or bicycle (bridleways), by non-motorised vehicles (restricted byways), and by all traffic (byways open to all traffic (BOATs)). In addition, there is also a host of other sites and routes that provide access opportunities in the county such as permissive paths, lanes, cycle tracks, common land, access land, forestry, country parks and wildlife sites.

In March 2007, Blaenau Gwent County Borough Council published its first 'Rights of Way Improvement Plan' (ROWIP).

The purpose of the ROWIP was to provide a 10-year plan outlining how the county would manage and improve its rights of way and access opportunities over the coming years.

Now, over ten years on from the initial production of the ROWIP, local authorities are required to make a new assessment including reviewing their previous ROWIPs and deciding whether or not to amend them. Given the legislative changes since the previous plan and economic challenges it is expected that all Welsh Authorities will produce new updated ROWIPs.

This document is available in Welsh / Mae'r ddogfen hon ar gael yn Gymraeg

This initial consultation document outlines the timetable, the assessment to be made and how the authority will review the existing Rights of Way Improvement Plan.

B. Outline of process

Publication of the previous ROWIP was subject to government guidance available in 2002. This outlined how the ROWIP should be produced, and the stages involved. These included widespread consultation with stakeholders (users, landowners, and other organisations); a review of relevant strategic documents; a condition assessment of the existing public rights of way network; and review of the Definitive Map. The result was the first detailed publicly available assessment of public rights of way and access opportunities in Blaenau Gwent including future aspirations and targets for improving.

Review and republication of a new ROWIP is subject to updated Welsh Government Guidance issued in 2016. Similar to its earlier iteration this outlines the process to be followed providing for:

- *Evaluation of the delivery of the previous ROWIP*
- *Evaluation of the current condition of the network and its legal record*
- *Evaluation of future needs and opportunities*
- *Development of a new statement of actions*
- *Development of delivery plans*
- *Publication of draft and consideration of representations.*

New ROWIPs will differ from earlier ROWIPs in the following ways:

1. **Additional 'Delivery Plans'** – Delivery plans are new annexes to the ROWIP. These will be flexible focused plans that can be reviewed and changed when necessary. The original ROWIP only provided for Statement of Actions which could not be changed without a review of the plan in its entirety.
2. **Assessment of previous ROWIP** – The extent to which actions in last ROWIP have been addressed will be considered and any outstanding actions highlighted to take forward.
3. **Review of limitations & authorised structures** – The guidance includes a direction to review and provide a summary of limitations & authorised structures on public rights of way.
4. **Links to new plans /strategies** – Links to other plans or strategies that have been developed since first ROWIP should be identified. In Blaenau Gwent reference to outdoor access; health & well-being; and transport links are referred to in the Corporate Plan, Destination Management Plan, Transport Plan, Local Development Plan, Decarbonisation Plan, Wellbeing Plan and Active Travel Maps.
5. **Focus on non-participants** – Consideration of the needs of wider public including those who currently do not participate in outdoor recreation regularly.
6. **Focus on blind, partially sighted and mobility users** – A further emphasis on considering needs of blind or partially sighted people and those with mobility issues is included.

Access Strategy

Will be part of a wider Access Strategy for Blaenau Gwent including Active Travel routes and how links can be made for access.

The following key pieces of legislation have also been enacted since publication of the previous ROWIP and will further assist in shaping the new plan:

1. **Well-being of Future Generations (Wales) Act 2013** – focus on Well-being for all those living in Wales and set out 7 key well-being goals: A prosperous Wales, a resilient Wales, a
- This document is available in Welsh / Mae'r ddogfen hon ar gael yn Gymraeg**

healthier Wales, a more equal Wales, a Wales of cohesive communities and a Wales of vibrant culture and thriving Welsh.

2. **Active Travel (Wales Act) 2013** – places duty on Local Authority's to secure new active travel routes eg walking, cycling to promote active travel journeys (eg to school, work). Active Travel Maps have been produced for each LA identifying key new routes to be created.
3. **Equality Act 2010** – these builds on the earlier Disability Discrimination Act 2015 and basically introduces a whole new set of 'protected characteristics' of the public which it is unlawful to discriminate against and places duty on LA's in carrying out its functions to give regard to this.

C. Terms of reference

The Countryside and Rights of Way (CROW) Act 2000 is the legal mechanism for the draft and review of ROWIPs. The review will be carried out by reference to the statutory and supplementary matters contained therein:

Statutory Matters

- The extent to which local rights of way meet the present and future needs of the public.
- The opportunities provided by local rights of way for exercise and other forms of open-air recreation and the enjoyment of the authority's area
- The accessibility of rights of way to blind or partially sighted people and others with mobility problems.

Supplementary matters

- The degree to which the previous ROWIP has been delivered.
- The present condition of the network and its record.
- The opportunities to contribute to Active Travel objectives, Well-being objectives and the delivery of other plans and priorities.

D. User facing timetable

The user facing timetable below sets out the different stages to be followed to produce a new up to date revised Rights of Way Improvement Plan and Access Strategy. It includes target dates by which each stage is to be completed and is broken down into individual tasks.

Inevitably some tasks may change /develop as views are sought and analysed from many organisations, individual and groups. Consequently, target dates are open to review, however draft plan consultations have a minimum 12-week period and there is a 12-month time limit to publish a new ROWIP from date a decision is made at Stage 3 below. Once the new ROWIP is complete it is then up to the council how often and how it wishes to monitor to keep the document relevant over the next 10 yrs.

Stages	Task	Target Date
Stage 1	<p><u>Review Planning</u></p> <ul style="list-style-type: none">• Project Inception• Produce user facing background• Produce outline of process (including differences to previous ROWIP)• Produce draft terms of reference• Produce draft timetable	January 2024
Stage 2	<p><u>Initial Consultation</u></p> <p><u>Issue Documents</u></p> <p>Publish background, outline, and draft documents to stakeholders as part of initial consultation addressing structure of the review and what is required.</p> <p>Publish to website and consult the following:-</p> <ul style="list-style-type: none">• Each Highway Authority adjoining Blaenau Gwent• Every Town/Community Council in Blaenau Gwent• Local Access Forum• Natural Resources Wales (NRW)• Statutory consultees for Public Path Orders• Internal stakeholders eg highways, health board, tourism, social services, leisure)• Any other local relevant persons/bodies <p>Collect and compile responses</p> <p><u>Review Responses</u></p> <p>Produce consultation report</p> <p>Amend programme timetable and terms of reference if necessary</p>	January – February 2024

Stage 3	<p><u>Review of Previous ROWIP</u></p> <p><i><u>Evaluation of the delivery of the previous ROWIP</u></i></p> <p>Summarise key matters identified in the previous assessment and ROWIP</p> <p>Summarise previous ROWIP statement of action</p> <p>Assess the extent of delivery of previous ROWIP</p> <p>Itemise outstanding actions</p> <p>Prepare summary report</p>	February -March 2024
Stage 4	<p><u>New Assessment</u></p> <p><i><u>Evaluation of the current condition of the network and its legal record</u></i></p> <p>Assess the current condition of local rights of way</p> <p>Assess the current Access in Blaenau Gwent, including Active Travel routes</p> <p>Assess accuracy of records</p> <ul style="list-style-type: none"> • Volume of outstanding modification and public path orders. • Records of limitation. • Potential for 2026 closure of records. • Processes for Recording, Changing <p>Assess how information & advice is made available</p> <ul style="list-style-type: none"> • Processes for Managing • Include network info and responsible use <p>Highlight key issues</p> <p><i><u>Evaluation of future needs and opportunities</u></i></p> <p>Consider relevant studies, assessments & plans that were previously unavailable</p> <ul style="list-style-type: none"> • The Welsh Outdoor Recreation Survey • Natural Resources Wales's Good for People Toolkit • Active Travel Maps • Local Well-being Assessments and Plans • Area Statements • Local Development Plans • Blaenau Gwent objectives • Destination Management Plan, • Transport Plan, • Decarbonisation Plan <p>Undertake targeted consultation and stakeholder engagement</p> <ul style="list-style-type: none"> • Consultation event with local communities • Engagement with groups of people who share relevant protected characteristics, or potential partners in delivery. <p>Produce evidence-based summary of public need.</p> <ul style="list-style-type: none"> • Identify needs that exist and are not being met. • Consider plans that identify need • Other specific criteria - geographical areas, groups of people, or high value improvements. 	January – May 2024

Stage 5	<p><u>Prepare Draft ROWIP and Access Strategy</u></p> <p>Consider areas of previous ROWIP that require update or amendment</p> <p>Produce revised statements of action</p> <p>Develop delivery plan by reference to statements of action</p> <p>Prepare new draft bilingual plan & circulate to LAF</p> <p>Prepare notices for notice of draft to be circulated in at least 2 local newspapers, local public venues & web</p> <p>Conduct 12-week public consultation on Draft ROWIP and Access Strategy</p> <p>Amend draft plan further to consultation and inform LAF of amendments.</p> <p>Agree protocol for dealing with any substantive objections.</p>	<p>June – October 2024</p> <p>Consult July-Oct 2024</p>
Stage 6	<p><u>Publish Final ROWIP and Access Strategy</u></p> <p>Ensure all agreed amendments to draft plan and annexed 'Delivery Plans' made.</p> <p>Place final copy on deposit at principal offices.</p> <p>Provide copy of new ROWIP and Access Strategy Document on website.</p> <p>Send notice of completion to relevant parties.</p> <p>Undertake any other appropriate publicity.</p>	<p>October 2024 – April 2025</p>
Stage 7	<p><u>Set up on-going monitoring procedure</u></p> <p>Monitor and update 'Delivery Plans' over life of ROWIP and Access Strategy.</p> <p>Review plan again in 10 years.</p>	<p>On-going</p>

Mr Gwyn Teague,
Team Manager – Natural Environment
Blaenau Gwent County Borough Council
The General Offices
Steelworks Road
Ebbw Vale
NP23 6DN

gwyn.teague@blaenau-gwent.gov.uk

This document is available in Welsh / Mae'r ddogfen hon ar gael yn Gymraeg

From: Tracy Gilmartin <tgilmartin@onevoicewales.wales>
Sent: 31 January 2024 15:30
To: Tracy Gilmartin
Subject: JOINT EVENT ONE VOICE WALES AND PLANNING AID WALES – THURSDAY 7 MARCH 2024 FROM 10.00AM UNTIL 2.00PM (REMOTE)

Follow Up Flag: Follow up
Flag Status: Flagged



Planning Aid Wales
Cymorth Cynllunio Cymru



Dear Chair/Clerk,

JOINT EVENT ONE VOICE WALES AND PLANNING AID WALES – THURSDAY 7 MARCH 2024 FROM 10.00AM UNTIL 2.00PM (REMOTE)

We are delighted to announce that One Voice and Planning Aid Wales have once again teamed up to provide Councils with a joint event that will enable councillors and Clerks to be at the forefront of current thinking in relation to the challenges faced by our communities and towns in addressing sustainability and achieving success as we focus our efforts on the best outcomes for people in Wales.

We are all working hard to create a sustainable future for the next generations. But how can our Welsh communities play a greater role in this difficult challenge?

We are fortunate to have keynote speakers from Welsh Government who are working on a shared vision about the way Wales can deliver changes needed for net zero. They will also be providing information on the Just Transition movement which is not only about addressing climate change but also about building a more inclusive and prosperous future for all communities.

We also have speakers from One Voice Wales and Friends of the Earth Cymru who will be looking at Biodiversity issues and Climate Change toolkits.

Planning Aid Wales will provide information about the new regime of Strategic Development Plans that will impact our communities in terms of future sustainable development.

We will also have the opportunity to focus on a few case-studies where we can learn from those working in local communities with an interest in renewable energy, allotments and growing and Place Plan projects. All of these communities are dealing with their own climate change challenges and we can learn from their innovative approaches.

This will be an interesting event for all with an interest in Planning, Climate Change and Biodiversity. There will be an opportunity for open discussion between all delegates and speakers.

Overall, the event promises to be a highly informative and positive experience for community leaders in Wales enabling them to reflect on their own personal experience of life in their towns and

communities and to assess with their councils after the event how action at the local level can be so important in helping their own community develop fresh opportunities designed to create a better future for all.

The cost per delegate will be £50 and bookings can be made direct with Planning Aid Wales using the following web-link:

<https://www.eventbrite.co.uk/e/planning-for-future-generations-registration-810059408497?aff=oddttdtcreator>

****If you would prefer an invoice and pay by cheque/BACS, please email kay@planningaidwales.org.uk or on 02920 625009****

We really hope for a record level of attendance and we would both encourage your council to take up at least one place on the remote event.

Yours faithfully,
James Davies
Chief Executive
Planning Aid Wales

Lyn Cadwallader
Chief Executive
One Voice Wales

Regards/Cofion
Tracy Gilmartin
Office Manager / Rheolwr Swyddfa
One Voice Wales / Un Llais Cymru
24c College Street / Stryd y Coleg
Ammanford / Rhydaman
SA18 3AF
01269 595400
07917 846510
tgilmartin@onevoicewales.wales

Un Llais Cymru



The principal representative body for Community and Town Councils in Wales/
The main representative body for Community and Town Councils in Wales

Website/Website: www.onevoicewales.org.uk



@onevoicewales

On leaving One Voice Wales, this email was scanned for all known viruses. We take the protection of your data seriously. For our Privacy Notice please click on the following link: http://www.onevoicewales.org.uk/OVWeb/privacy_policy-7450.aspx This will explain how we use your information and the ways in which we protect your privacy. We welcome receiving correspondence in Welsh. Any correspondence received in Welsh will be answered in Welsh and corresponding in Welsh will not lead to a delay in responding.

This email is for the sole use of the intended recipient and contains information that may be privileged and/or confidential. If you are not an intended recipient, please notify the sender by return email and delete this email and any attachments.

When leaving One Voice of Wales, this email was scanned for every virus known. We take the need to protect your data very seriously. To view our Privacy Notice please press the following link: http://www.unllaicymru.org.uk/OVWeb-CYM/polisi_preifatrwydd-16738.aspx This will explain how we use your information and how we protect your privacy. We

“Access Denied”: Older people’s experiences of digital exclusion in Wales:

Social Media Pack

The Older People’s Commissioner for Wales has published a new report which highlights that many older people who are digitally excluded are finding it increasingly difficult, if not impossible, to access the information and services they need – including crucial services such as health appointments – while also facing significant barriers that can lead to or reinforce digital exclusion, such as maintaining digital skills, costs and concerns about security.

Older people’s responses highlighted a range of problems due to not being online or having limited digital skills. These covered everything from feeling pressured into using online banking, to difficulties booking healthcare appointments, to more day-to-day issues such as not being able to park the car or take part in social activities. People also shared that finding the right kinds of support to help them get and stay online, including training and financial support, can often be difficult.

You can read the report here: <https://olderpeople.wales/resource/access-denied-older-peoples-experiences-of-digital-exclusion-in-wales/>

Please do take a look and feel free to share this link with any colleagues or contacts that may find it helpful.

We want to share the Commissioner’s findings and details of the action required with as many older people and stakeholders throughout Wales as possible and we hope you can help us by sharing the report / key findings through your social media channels.

To make this easier, we’ve prepared some suggested posts in English and Welsh below, together with suggested images you can share with the posts.

Many thanks for your help!

Post 4

Older people are often disadvantaged by not being able to access financial, health or other key services online.

@talkolderpeople's new report explores their experiences and the impact the increasing use of digital technology is having on people's lives.

Read the report here: <https://olderpeople.wales/resource/access-denied-older-peoples-experiences-of-digital-exclusion-in-wales/>

Post 5

@talkolderpeople's recent report on older people's experiences of digital exclusion has found that poor quality offline alternatives mean that those not online are finding it increasingly difficult to access the information and services they need.

Read the report here: <https://olderpeople.wales/resource/access-denied-older-peoples-experiences-of-digital-exclusion-in-wales/>

Alt Text: Quote from the report alongside an older man looking frustrated with a laptop

Older people's Experiences of Digital Exclusion in Wales

"Called at my doctor's surgery to make an appointment and was informed appointments could not be made except online.

"I explained I didn't and could not use a computer and asked what to do, and the receptionist repeated appointment to be done online. I asked her what could I do and was told again online only. I left very upset'."

- Survey response from older person

comisiynyddph.cymru
olderpeople.wales



Comisiynydd Pobl Hŷn Cymru
Older People's Commissioner for Wales

Alt Text: Quote from the report alongside an older woman with her head in her hands

Older people's Experiences of Digital Exclusion in Wales

"I am in my 70's and do feel I am increasingly excluded from things because I do not have a Smartphone. How does one choose what type of Smartphone?

"Understanding the memory capacity of the phone in relation to apps. Security matters when using it. Where to get training in using it. We don't all have knowledgeable younger family members/friends."

- Survey response from older person



comisiynyddph.cymru
olderpeople.wales



Comisiynydd Pobl Hŷn Cymru
Older People's Commissioner for Wales

Alt Text: Quote from the report alongside an older woman looking into the distance

Older people's Experiences of Digital Exclusion in Wales

"Depression, loneliness, and humiliation, to name but three. We are being abandoned and no one gives a damn for those who cannot cope with the scope and speed of the changes.

"We hear a lot about choice, and in the market place, it seems to be the road to success for business, but convenience for the profiteers, means misery for a large part of our society."

- Survey response from older person



comisiynyddph.cymru
olderpeople.wales



Comisiynydd Pobl Hŷn Cymru
Older People's Commissioner for Wales

Blaenau Gwent CBC Planning Control / Rhoeli Cynllunio CBS Blaenau Gwent

General Offices
 Steelworks Road
 Tylwyn, Ebbw Vale, NP23 6AA.
Tel: 01495 355555 **Fax:** 01495 355598
Email: planning@blaenau-gwent.gov.uk

Swyddfeydd Cyffredinol
 Heol Gwaith Dur
 Tŷ Llwyn, Glyn Ebwy, NP23 6AA.
Ffon: 01495 355555 **Ffacs:** 01495 355598
E-bost: planning@blaenau-gwent.gov.uk

Item 4a)



www.blaenau-gwent.gov.uk

Householder Application for Planning Permission for works or extension to a dwelling**Town and Country Planning Act 1990****Publication of applications on planning authority websites**

Please note that the information provided on this application form and in supporting documents may be published on the Authority's website. If you require any further clarification, please contact the Authority's planning department.

Site Details

If you cannot provide a postcode, the description of site location must be completed. Please provide the most accurate site description you can, to help locate the site - for example "field to the North of the Post Office".

Number

36

Suffix

Property Name

Address Line 1

Glanstruth

Address Line 2

Town/city

Blaina

Postcode

NP13 3NB

Description of site location (must be completed if postcode is not known)

Easting (x)

320617

Northing (y)

208456

Description

Applicant Details

Name/Company

Title

Mr & Mrs

First name

Surname

Price

Company Name

Address

Address line 1

36 Glanystroth

Address line 2

Address line 3

Blaenau Gwent

Town/City

Blaina

Country

Postcode

NP13 3NB

Are you an agent acting on behalf of the applicant?

☒ Yes

☐ No

Contact Details

Primary number

Secondary number

Email address

Agent Details

Name/Company

Reference: PP-12668569

Title

Mr

First name

Luke

Surname

Brennan

Company Name

Brennan Architectural Design

Address

Address line 1

1 Coed Duffryn

Address line 2

Address line 3

Town/City

Aberdare

Country

Postcode

CF44 0DB

Contact Details

Primary number

[REDACTED]

Secondary number

Email address

[REDACTED]

Description of Proposed Works

Please describe the proposed works

Proposed single storey rear extension to the North elevation

Has the work already been started without planning permission?

☐ Yes

☒ No

Pedestrian and Vehicle Access, Roads and Rights of Way

Is a new or altered vehicle or pedestrian access proposed to or from the public highway?

☐ Yes

☒ No

Do the proposals require any diversions, extinguishment and/or creation of public rights of way?

☐ Yes

☒ No

Please show details of any existing or proposed rights of way on or adjacent to the site, as well as any alterations to pedestrian and vehicle access, on your plans or drawings.

Trees and Hedges

Are there any trees or hedges on the site or adjoining the proposed site that would be affected by the development proposal?

☐ Yes

☒ No

If you have answered Yes, you may need to provide a survey before your application can be validated. Your local planning authority can advise on whether a survey is required, in accordance with the current 'BS5837: Trees in relation to design, demolition and construction - Recommendations'

Biodiversity and Geological Conservation

Does your proposal involve:

(i) demolition of a building?

☐ Yes

☒ No

(ii) alterations or enlargement to your roof?

☐ Yes

☒ No

(iii) the loss of any trees or hedgerows?

☐ Yes

☒ No

If you have answered Yes to any of the above questions, you may be required to submit a biodiversity survey to your local planning authority with your application form.

Your local planning authority will be able to advise you further, guidance is also available in the help text.

Site Visit

Can the site be seen from a public road, public footpath, bridleway or other public land?

- ☒ Yes
☐ No

If the planning authority needs to make an appointment to carry out a site visit, whom should they contact? (Please select only one)

- ☐ The agent
☒ The applicant
☐ Other person

Pre-application Advice

Has pre-application advice been sought from the local planning authority about this application?

- ☐ Yes
☒ No

Authority Employee/Member

With respect to the Authority, is the applicant or agent one of the following:

- (a) a member of staff
(b) an elected member
(c) related to a member of staff
(d) related to an elected member

Do any of these statements apply to you?

- ☐ Yes
☒ No

Ownership Certificates

Town and Country Planning (Development Management Procedure) (Wales) Order 2012

Please answer the following questions to determine which Certificate of Ownership you need to complete: A,B,C or D.

Are you the sole owner of ALL the land?

- ☒ Yes
☐ No

Certificate of Ownership - Certificate A

I certify/the applicant certifies that on the day 21 days before the date of this application nobody except myself/the applicant was the owner (owner is a person with a freehold interest or leasehold interest with at least seven years left to run) of any part of the land or building to which the application relates.

Person Role

- ☒ The Applicant
☐ The Agent

Title

First Name

Surname

Declaration Date

☒ Declaration made

Agricultural Holding Certificate

Town and Country Planning (Development Management Procedure) (Wales) Order 2012

Agricultural land declaration - you must select either A or B

- ☒ (A) None of the land to which the application relates is, or is part of an agricultural holding
- ☐ (B) I have/The applicant has given the requisite notice to every person other than myself/the applicant who, on the day 21 days before the date of this application, was a tenant of an agricultural holding on all or part of the land to which this application relates, as listed below

Person Role

- ☒ The Applicant
- ☐ The Agent

Title

First Name

Surname

Declaration Date

☒ Declaration made

Declaration

I/We hereby apply for Householder planning permission as described in the questions answered, details provided, and the accompanying plans/drawings and additional information.

I/We confirm that, to the best of my/our knowledge, any facts stated are true and accurate and any opinions given are the genuine opinions of the person(s) giving them.

I/We also accept that:

- Once submitted, this information will be made available to the Local Planning Authority and, once validated by them, be made available as part of a public register and on the authority's website;
- Our system will automatically generate and send you emails in regard to the submission of this application.

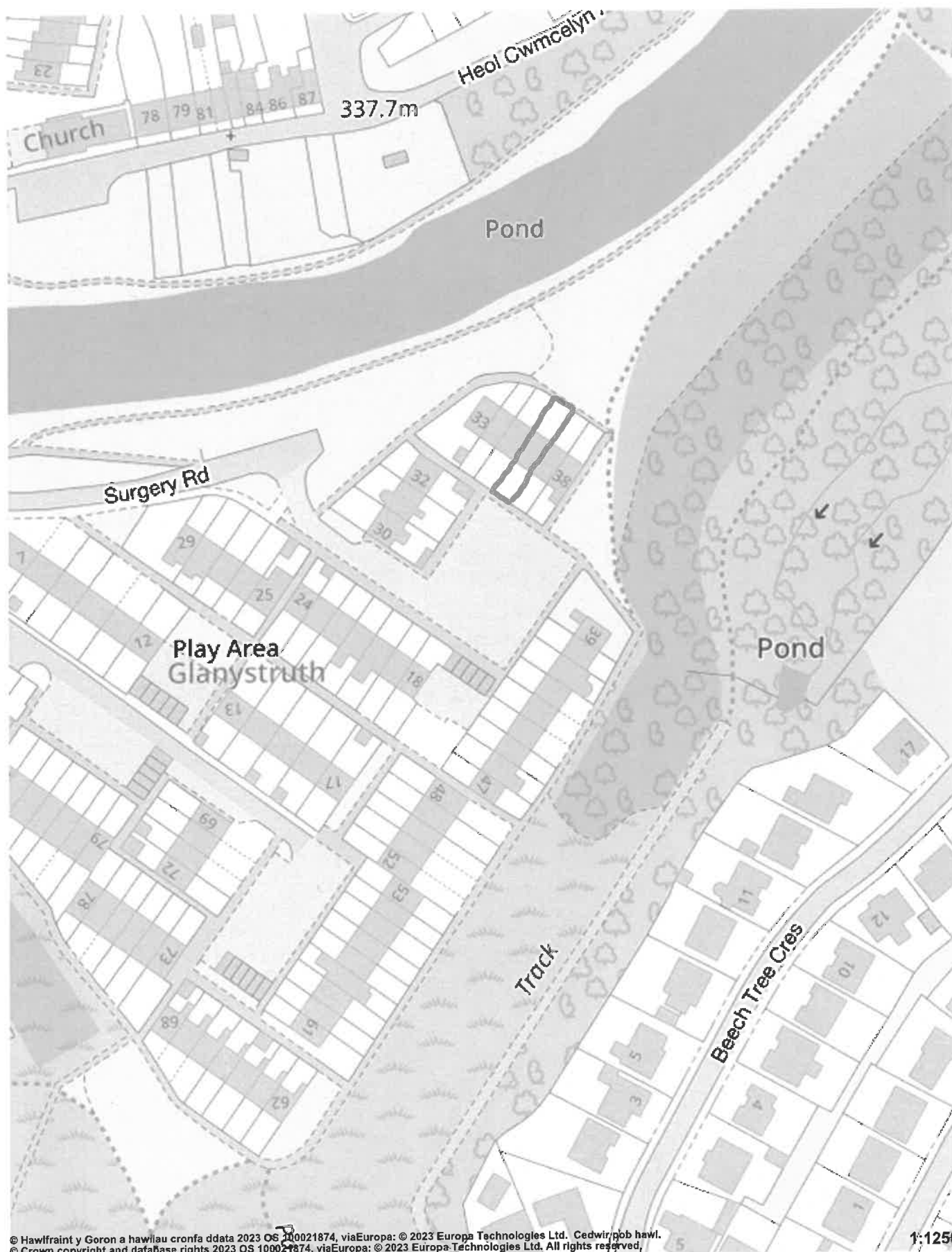
☒ I / We agree to the outlined declaration

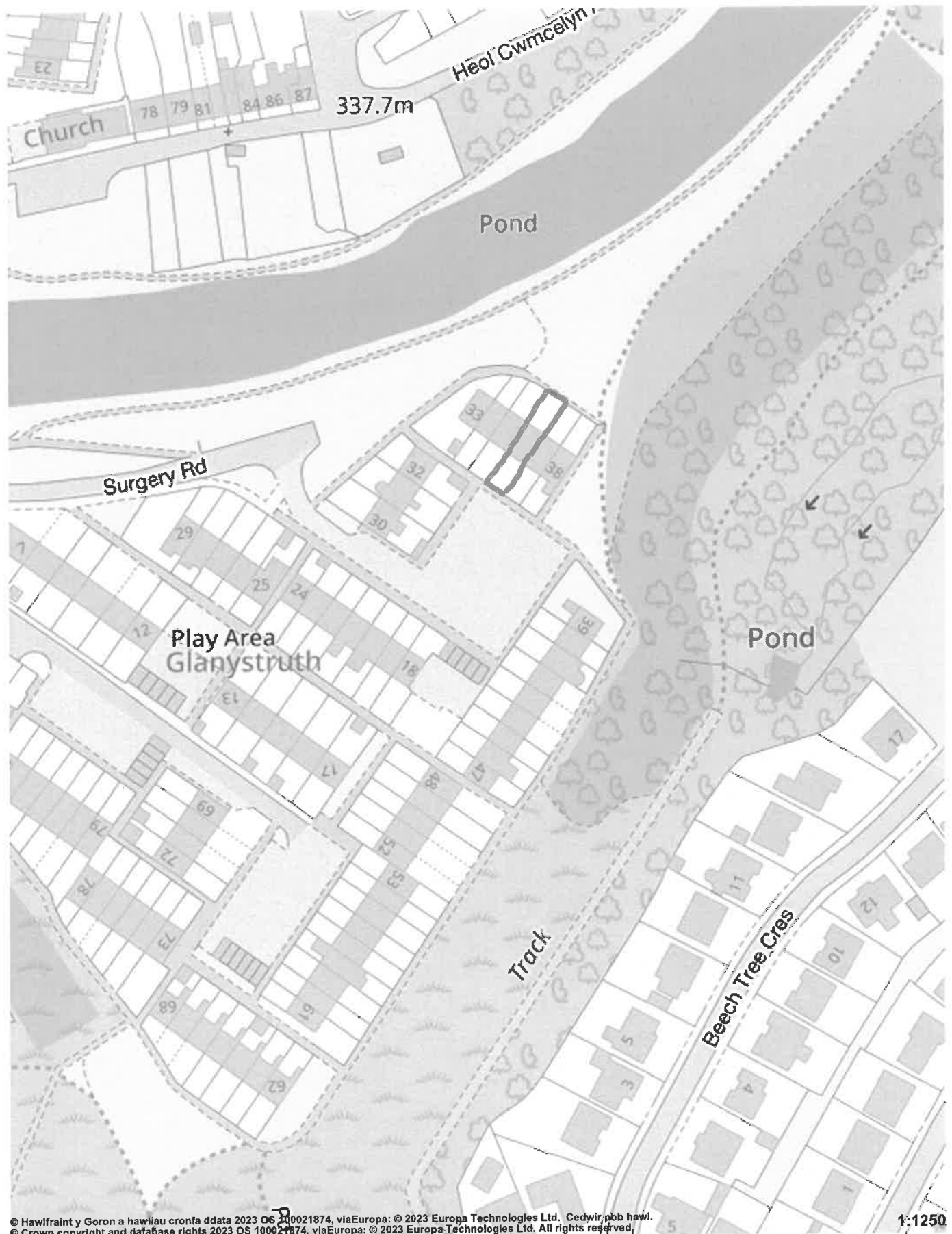
Signed

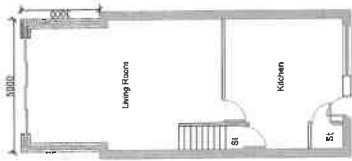
[Redacted Signature]

Date

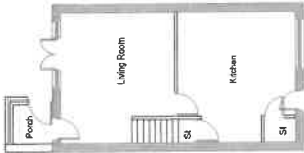
18/01/2024



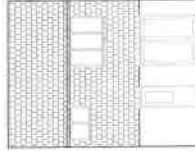




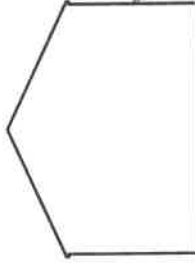
Proposed GF Plan
Scale 1:100



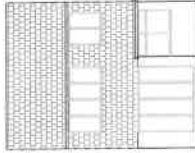
Existing GF Plan
Scale 1:100



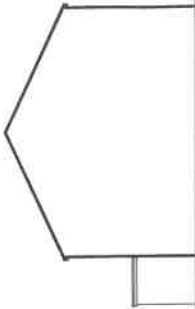
Existing South Elevation
Scale 1:100



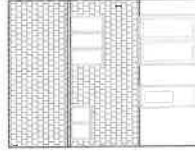
Existing East Elevation
Scale 1:100



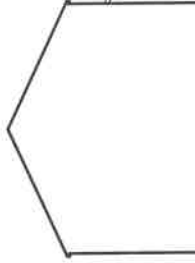
Existing North Elevation
Scale 1:100



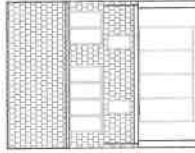
Existing West Elevation
Scale 1:100



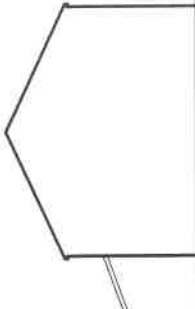
Proposed South Elevation
Scale 1:100



Proposed East Elevation
Scale 1:100



Proposed North Elevation
Scale 1:100



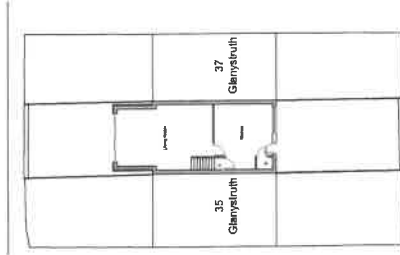
Proposed West Elevation
Scale 1:100

Aesthetic Notes

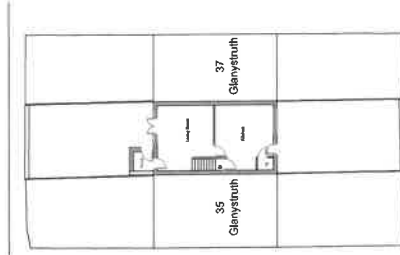
Existing Building
Walls - Part rendered and part tiled cladding
Roof - Pitched roof with concrete tile.
Eaves, gutters, rwp and soffits - White pvc
Windows & Doors - Double Glazed brown uPVC

Proposed Extension
Walls - Smooth render finish. Colour - TBC
Roof - mono-pitched not fitted with concrete tiles to match existing
Eaves, gutters, rwp and soffits - White pvc
Windows & Doors - Double Glazed white uPVC

Notes:
All dimensions must be checked on site and not scaled from this drawing.
This drawing has been prepared for planning purposes only.



Proposed Site Plan
Scale 1:200



Existing Site Plan
Scale 1:200

Planning Application
Proposed single storey extension

Applicant: Mr and Mrs Price

Address:
36 Glanystroth
Blaina

Date: Nov 2023

Scale: As Shown

dwg no: 2023-001 Glan

Rev: